

MONDAY MORNING



December 2, 2024

Celebrating the Season of Gratitude - Manheim Township



“We are so thankful for each and every one of these staff members that made today happen,” says Manheim township. Nine school buildings in the Manheim Township were served turkey dinner paired with Kauffman Apple Cider. What a great example of PA Farm to Table in action!

PA Beef Council ‘Beefs Up’ School Lunches for Pennsylvania Students

“Beef has so much to offer including ten essential nutrients that can support a healthy and active lifestyle. We continue to be extremely passionate about fueling young students with beef and connecting the dots between Pennsylvania farm families and beef meals on the lunch tray,” said, Nichole Hockenberry, PA Beef Council, Executive Director. “Our desire is to provide more beef, more often in schools which offers sound nutrition and a great eating experience and ultimately grow the next generation of beef consumers.”



[Full Article Here](#)



SNAPA PRESENTS

MONDAY'S FOR MANAGERS

MONDAY 16 DECEMBER

2:00 PM

SNAPA Monday's for Managers - Professional Development Webinar Series

"Monday's for Managers," is a webinar series designed to provide valuable professional development opportunities for manager-level SNAPA members. Starting this December, the series will feature educational and interactive sessions focused on leadership, workplace effectiveness, and career growth.

Join us on Monday, December 16, at 2:00 PM for our first session, *LEAD to Succeed: How Do You Bring Value to the Workplace." This session will help managers sharpen their skills in delivering value, inspiring teams, and driving workplace success. Whether you're a seasoned manager or new to the role, this training will offer insights to help you lead with impact.

Webinar Details:

- Date: Monday, December 16, 2024
- Time: 2:00 PM
- Topic: LEAD to Succeed - How Do You Bring Value to the Workplace
- Cost: FREE for SNAPA Members

Don't miss this chance to learn, network, and enhance your leadership skills. "Monday's for Managers" is your opportunity to invest in your personal and professional growth, while also connecting with other industry leaders.

Stay tuned for more upcoming sessions in 2025, and get ready to LEAD to Succeed with SNAPA!

Register Here



Attention Directors! Join us for the 2025
SNAPA Commodity Show!



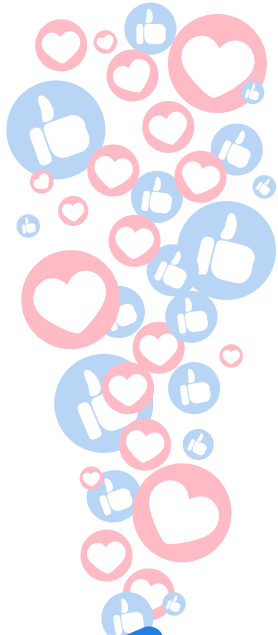
JANUARY | 17th | 2025

STATE COLLEGE HIGH SCHOOL

650 WESTERLY PKWY, STATE COLLEGE, PA 16801



[Register Here](#)



Like
Share

Universal School Meals for All Day of Action December 5th

Use your influence to insight change. December 5th is a day dedicated to Action! Join Universal School Meals PA and get involved in this potentially policy shaping event.

UNIVERSAL SCHOOL

MEALS

WE ARE PROUD TO HOST OUR FIRST EVER ADVOCACY DAY! PLEASE JOIN US IN A DAY OF ACTION SURROUNDING UNIVERSAL MEALS, TAPPING INTO OUR PERSONAL NETWORKS TO SPREAD THE WORD!

SCAN THE QR CODE OR
[CLICK HERE](#) TO TELL
YOUR LEGISLATORS THAT
YOU SUPPORT
UNIVERSAL MEALS!



PA Farm to School Network Virtual Open House – December 12th

You're invited to the PA Farm to School Network's (PFSN) December virtual open house on December 12th from 3:00 pm - 4:30 pm to discuss ways farmers can bring their farms to local schools.

Farmers are a vital part of the farm to school movement, during this open house, we will discuss ways farmers can engage with schools and farm to school programming, and share resources for farmers to get more involved with their local schools.

SCHOOL NUTRITION ASSOCIATION OF PENNSYLVANIA

RED ROSE VISITS KAUFFMAN ORCHARDS

Join us for a "behind the scenes" educational tour of the orchards & production area! plus....

- Grower Q&A
- Growing practices/factors that affect flavor and nutrient density
- Apple Cider Sampling
- Meet with wholesale team about how to order

THURSDAY 23 JAN
4:50 PM - 6:50 PM
5097 OLD PHILADELPHIA PIKE
BIRD IN HAND, PA 17505

PARKING WILL DEPEND ON TOTAL RSVP. PLEASE WATCH FOR EMAIL UPDATE/FACEBOOK UPDATE ON 1/9/25
CEU WILL BE AVAILABLE PENDING SHA APPROVAL
RSVP IS REQUIRED TO JENNY BY JAN 9TH 2025!
STRICKLERJD@LANCASTERMENNONITE.ORG

LIKE US ON FACEBOOK: RED ROSE CHAPTER 19-SNAPA

Questions please contact Kelly Price at Pricek@snapa.net

During this meeting, featured presenter, Tammy Howard, agriculture specialist with the National Center for Appropriate Technology (NCAT) will talk about NCAT's project in conjunction with the USDA FNS Office of Community Food Systems, the National Farm to School Network, and New York University, Bringing the Farm to School!

A panel featuring farmers, and farm to school partner organizations will share how they connect their farms to local schools and some helpful resources for getting started. During the open house, there will also be an opportunity to connect with farm to school practitioners in your region!

Register to attend the virtual open house, held over Zoom, here!

Thank you Partners!

J.T.M.[®]
FOOD GROUP




Moccia Enterprises, Inc.
Since 1963.

JonnyPops
Kaufmann and Associates Inc.
Kay Food Marketing
KDP-SNAPPLE
Kent Precision

Kint Beverage Concepts/Slush Puppie
Los Cabos
M.K. Food Service Equipment
Maid-Rite Specialty Foods, LLC
Maxwell-McKenney
Mondelez International
Nippon Shokken U.S.A. Inc.
Oliver Packaging & Equipment
PA Beef Council
Palmer Hamilton LLC



AMERICAN DAIRY ASSOCIATION
NORTH EAST



PROUDLY PART OF BRADYPLUS



www.snapa.org/executivedirector@snapa.org